

<b>WinFrog Device Group:</b>	OUTPUT
<b>Device Name/Model:</b>	GeoMetrics 880 Out
<b>Device Manufacturer:</b>	
<b>Device Data String(s) Output to WinFrog:</b>	none
<b>WinFrog Data String(s) Output to Device:</b>	\$magnetic field, signal strength, raw depth, raw altitude
<b>WinFrog .raw Data Record Type(s):</b>	No raw data logging.

**DEVICE DESCRIPTION:**

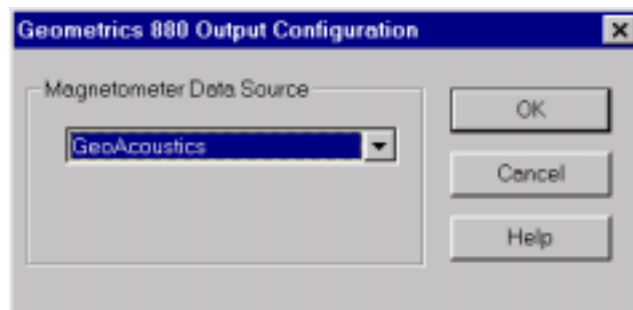
Outputs the data described above. The intention is to use this device along with the GeoAcoustics magnetometer that outputs depth and altitude in raw form. The raw form is from an A/D converter, thus scaling is required at the receiving end of this data. If another magnetometer device is selected (described below) it will output the data in whatever units that the particular device uses.

**DEVICE CONFIGURATION INSTRUCTIONS:**

Baud Rate: 9600  
 Bits Per Character: 8  
 Stop Bits: 1  
 Parity: None

**WINFROG I/O DEVICES > CONFIG OPTIONS:**

The following dialog allows you to select which device the magnetometer data is to be obtained from.



If a device is not selected no data will be output.

**WINFROG VEHICLE TEXT WINDOW > CONFIGURE VEHICLE DEVICES > DEVICE  
> EDIT OPTIONS:**

**Data item:   OUTOUT, GeoMetrics880 Out, OUTPUT**

Attach this data item to the ROV for which data is to be output along with the magnetometer. There is no user configuration of this data item.